



Sometimes patients can move on their own. Sometimes they can walk, but they need help.

The Ultramove is specifically designed to steady patients as they rise to a standing position. Integrated seating pads offer a place to rest during transport. Or remove the footplate and allow your patient to walk on their own. Pads can be swiveled to offer seating as needed.

Protect yourself and protect those your care for.

Ultramove is perfect for those patients who are mobile and can bear their own weight, but who may tire easily.

Ultramove Transfer Device

tollos

The Ultramove® is a non-electric transfer device that allows patients to safely rise with minimal assistance. Manufactured in North America, this device is versatile enough to get your patients from one place to another, but is optimized for patient comfort and safety, as well as reduced caregiver injury.

The Ultramove is also suitable for as an ambulatory aid.

Ultramove Features

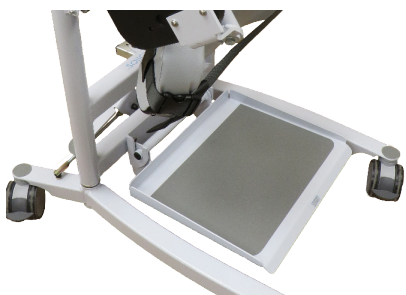
- 400 lb capacity
- Adjustable seating angle
- Shin pad positioning
- EZ Roll casters
- Leg widening capabilities
- Optional harness available
- Optional O2 tank carriage

The Ultramove offers a safe way to transfer patients who require minimal assistance.

TECHNICAL SPECIFICATIONS

Maximum Weight Capacity:	400 lbs (181 kg)
Dimensions:	32" x 27" x 43" (813 x 686 x 1092 mm)
Overall Weight:	58 lbs (26 kg)
Floor to Foot Plate:	2.8 inches (71 mm)
Working Leg Length:	22.75 inches (578 mm)
Total Leg Length:	32 inches (813 mm)
Turn Radius	39.75 inches (1010 mm)
Casters:	3" front (76 mm) 3" locking in rear (76 mm)
Harness:	Optional
O2 Tank Carriage:	Optional

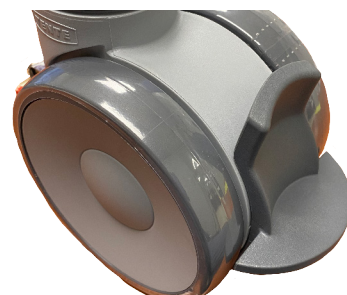
For added safety & peace of mind, supplement your Ultramove with the Tollos Ultramove Back Support Strap - Part No.: TQM2200, 1 each/ pkg.



Patients simply step onto the foot plate and elevate to a standing position, either on their own or with caregiver assistance.



The Ultramove integrated seating pads swivel into place, allowing for rest during transport or ambulation.



The sleek, space-saving design of the casters means the Ultramove is easy to move and can be securely braked.

